



## Zeigertiere für die Gewässergüte

Cütekategorie

Zeigertiere (hellgrau): Tiere in Originalgröße. Übrige Tiere sind etwa in Originalgröße dargestellt.)

**I**  
unbelastet  
(dunkelblau)

Vielaugenstrudelwurm      Köcherfliegenlarven      Steinfliegenlarven      Lidmückenlarven      Köcherfliegenlarven

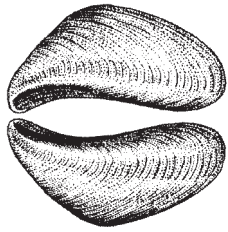
**I-II**  
gering  
belastet  
(hellblau)

Hakenkäfer      Libellenlarve      Eintagsfliegenlarve      Köcherfliegenlarven      Steinfliegenlarven      Steinfliegenlarven      Dreieckskopfstrudelwurm

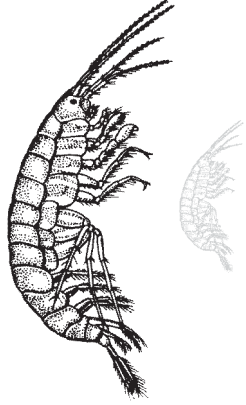


mäßig  
belastet

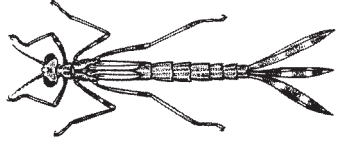
(dunkelgrün)



Wandermuschel



Bachflohkrebs



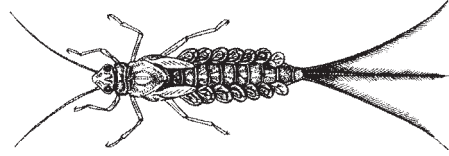
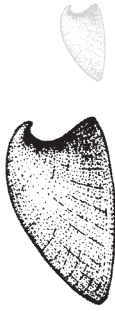
Prachtlibellen



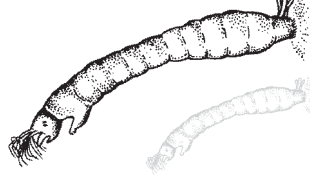
Süßwasserschwämme



Flussnapfschnecke



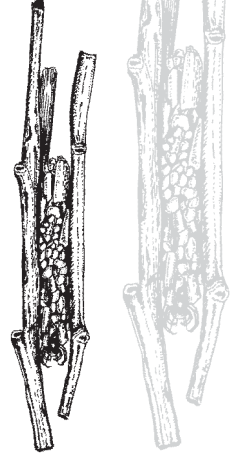
Eintagsfliegenlarven



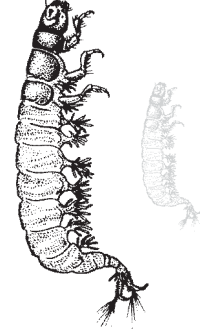
Kriebelmücken

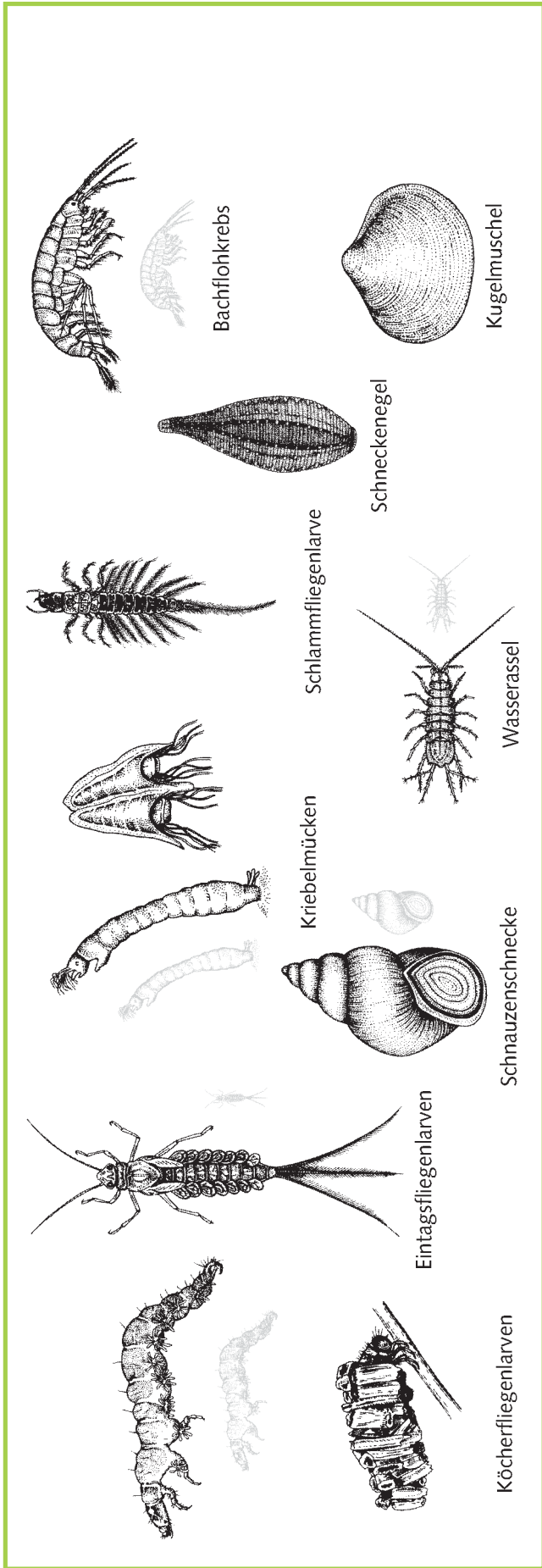


Malermuschel

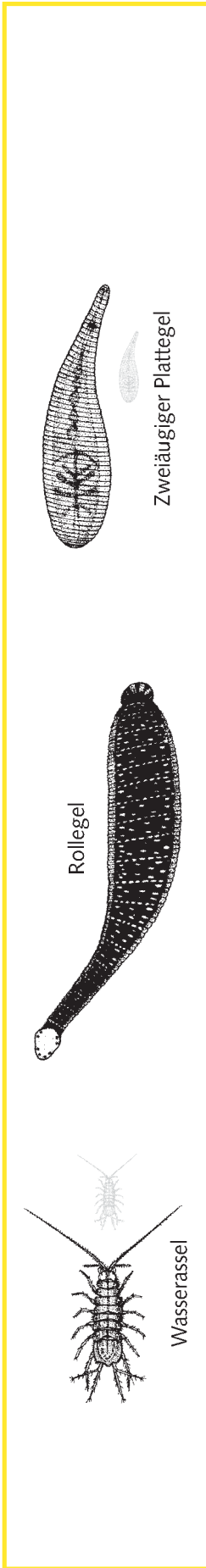


Köcherfliegenlarven

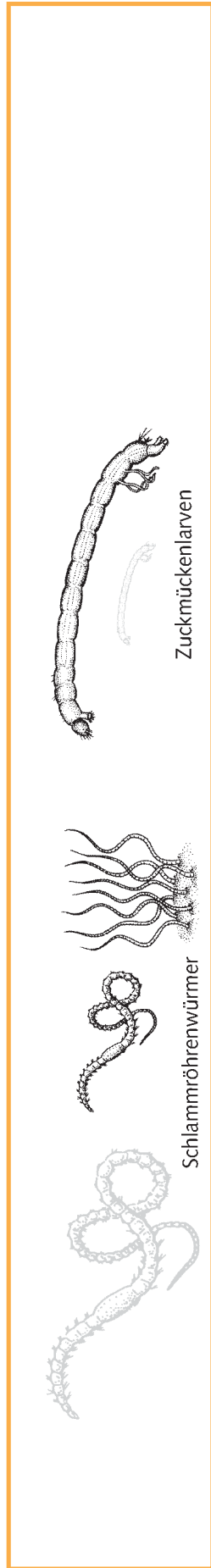




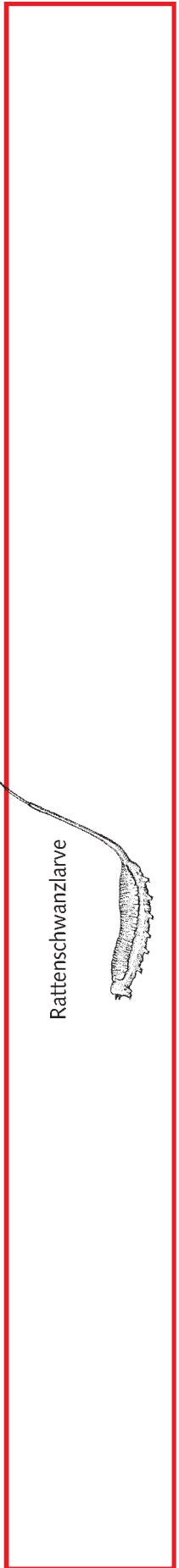
III-III  
**kritisch belastet**  
 (hellgrün)



III  
**stark verschmutzt**  
 (gelb)



III-IV  
**sehr stark verschmutzt**  
 (orange)



IV  
**übermäßig verschmutzt**  
 (rot)